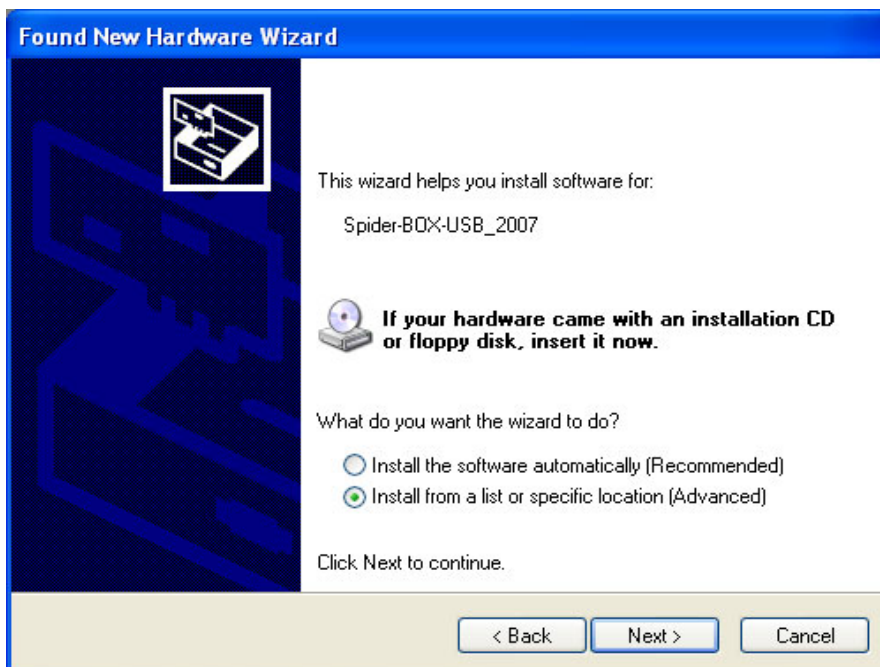


# SpiderMan Box User Manual

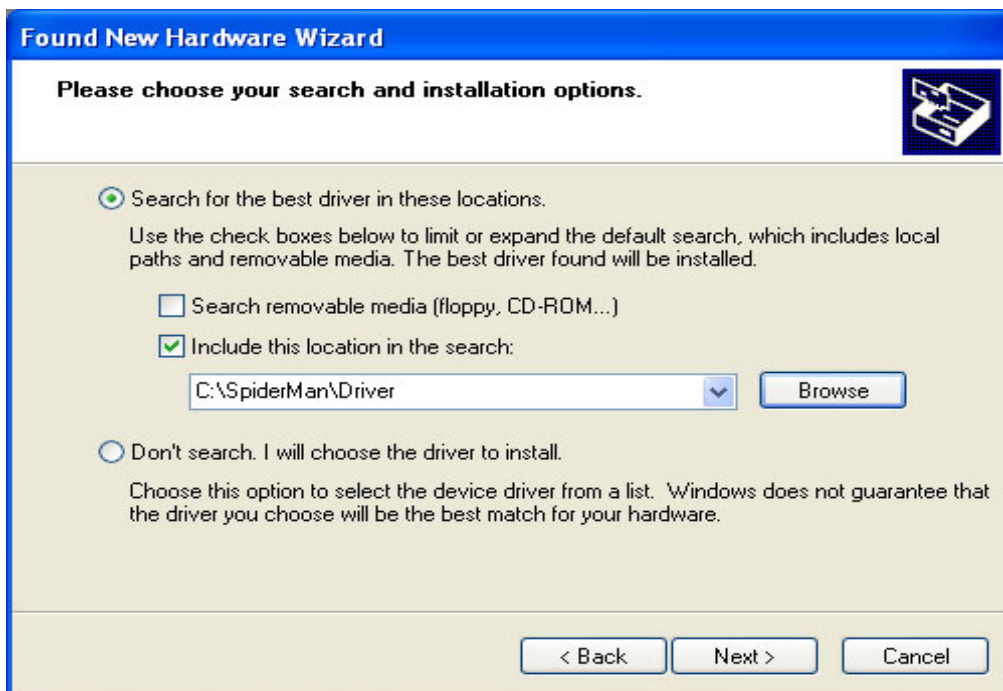
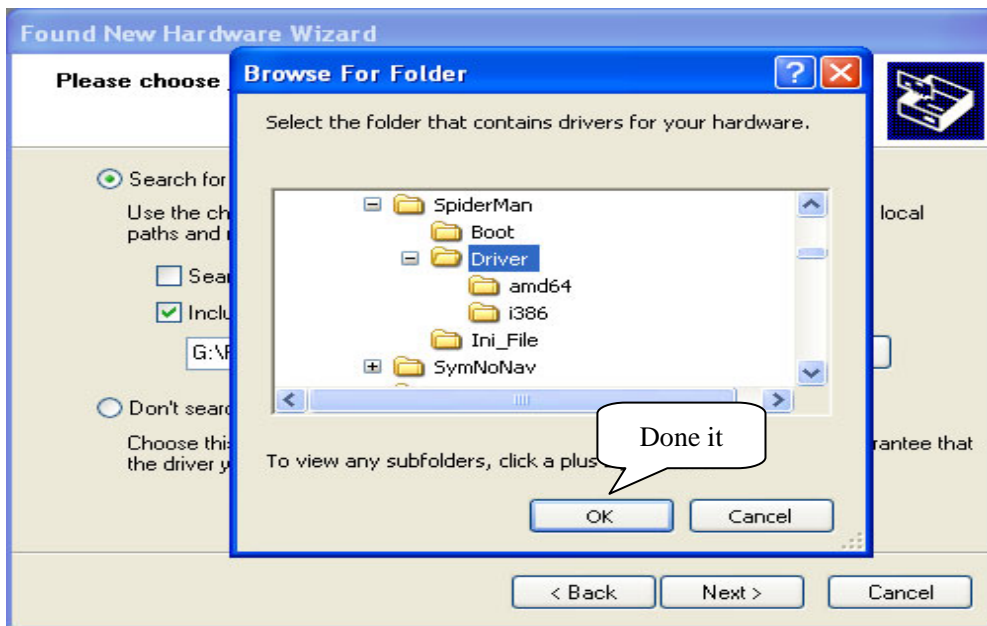
## 1. Hardware Install:

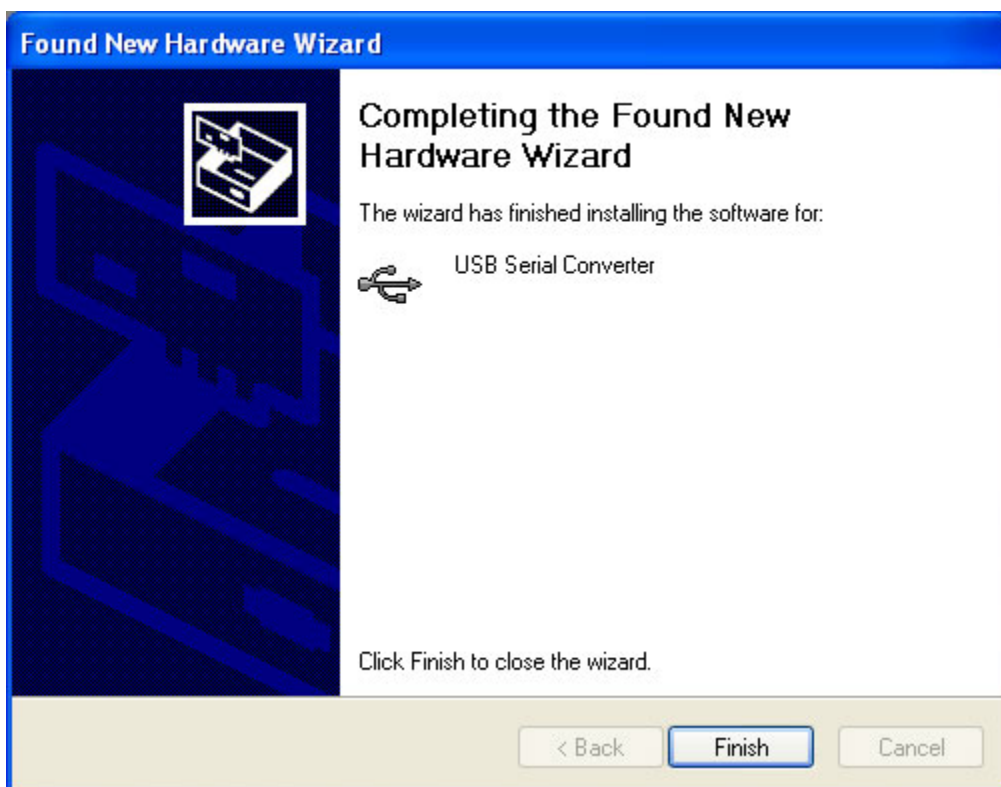
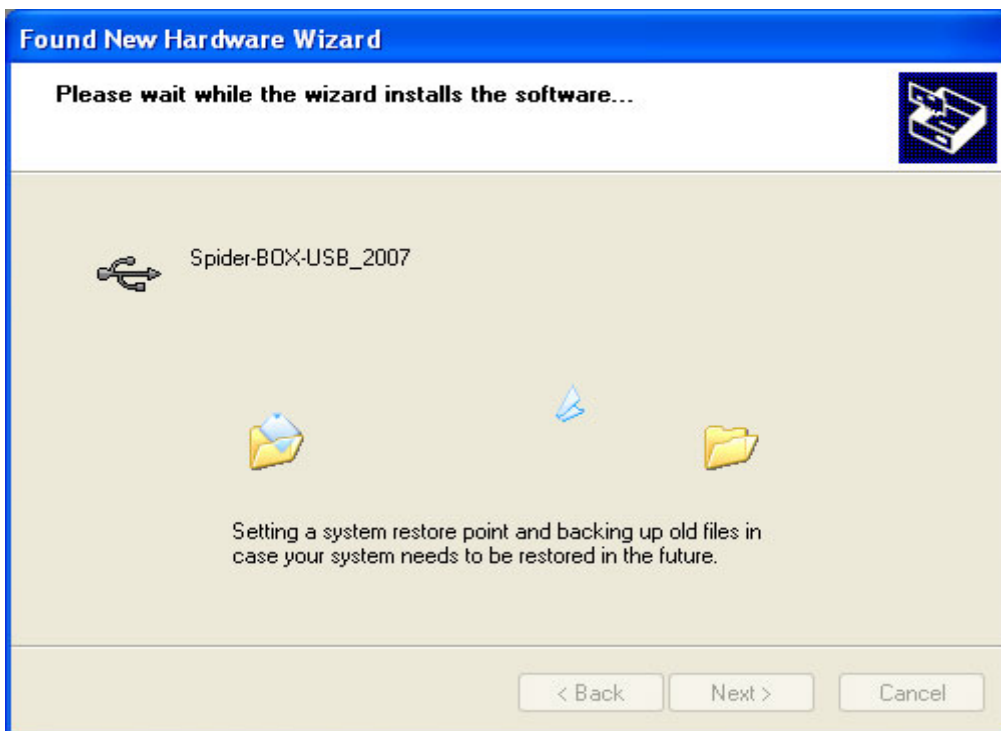
### 1.1 Drivers Install

#### 1.1.1 Box Driver(SpiderManBox)



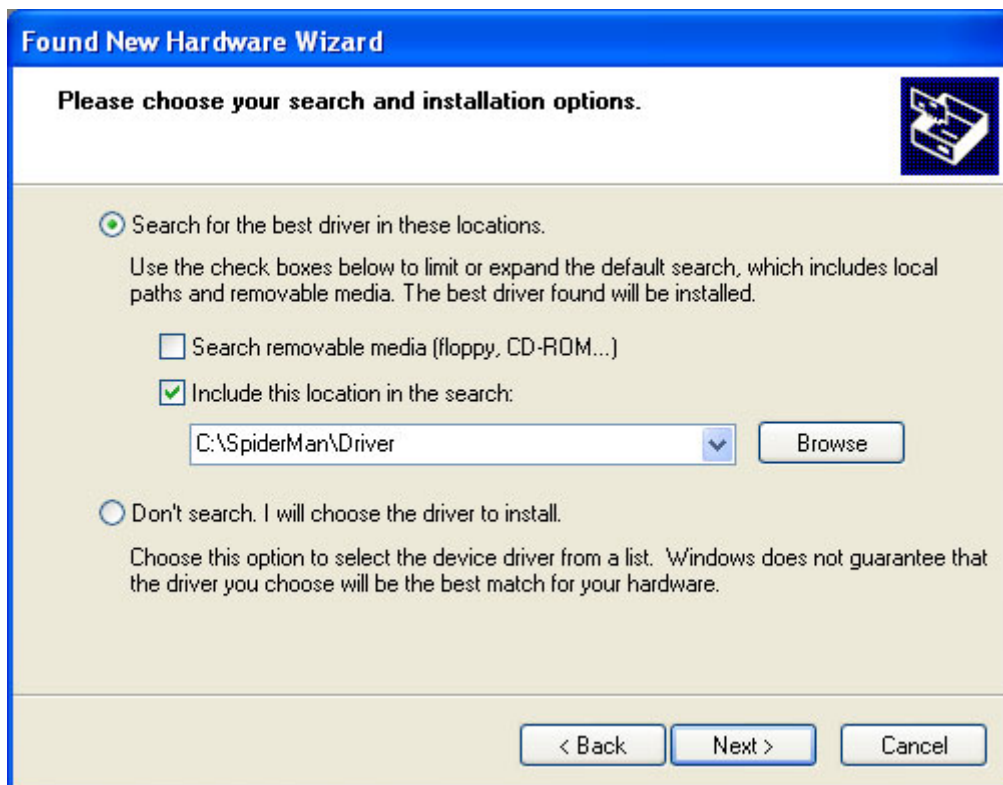
You can find new hardware(Spider-Box-USB\_2007)

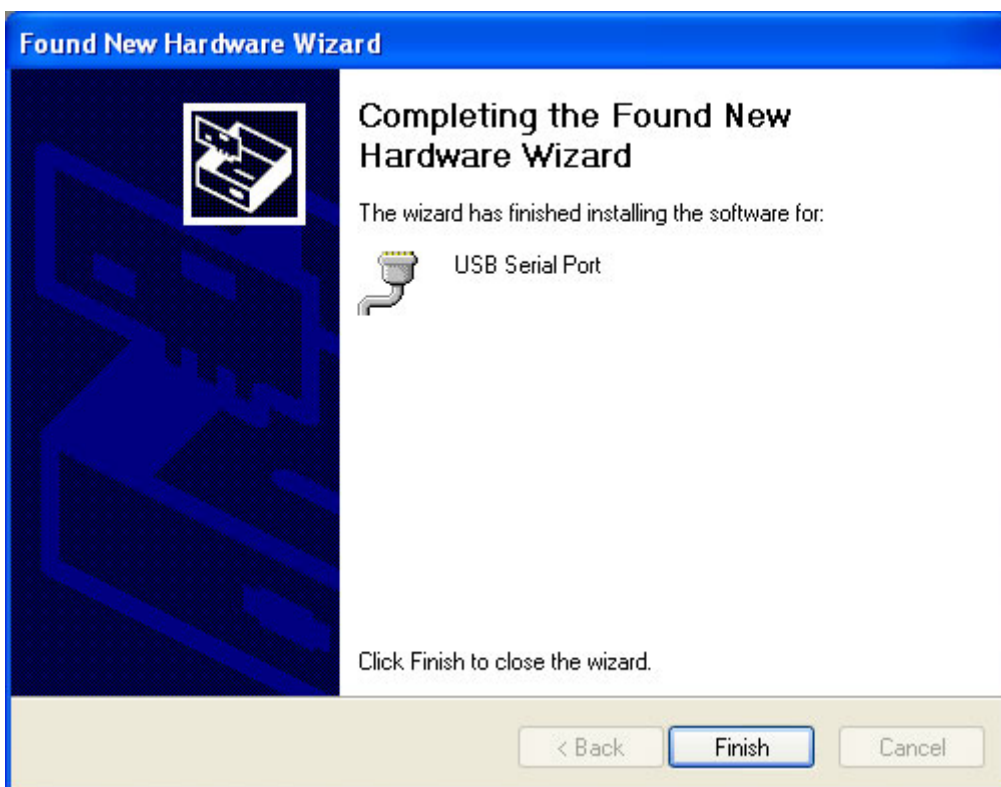
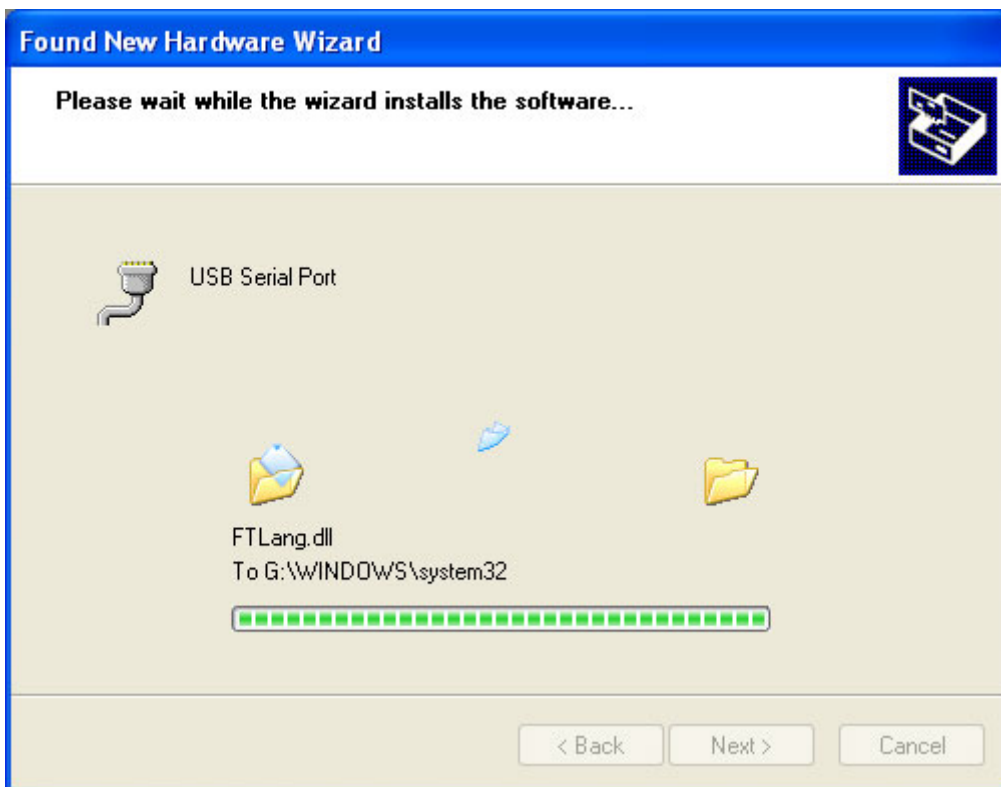




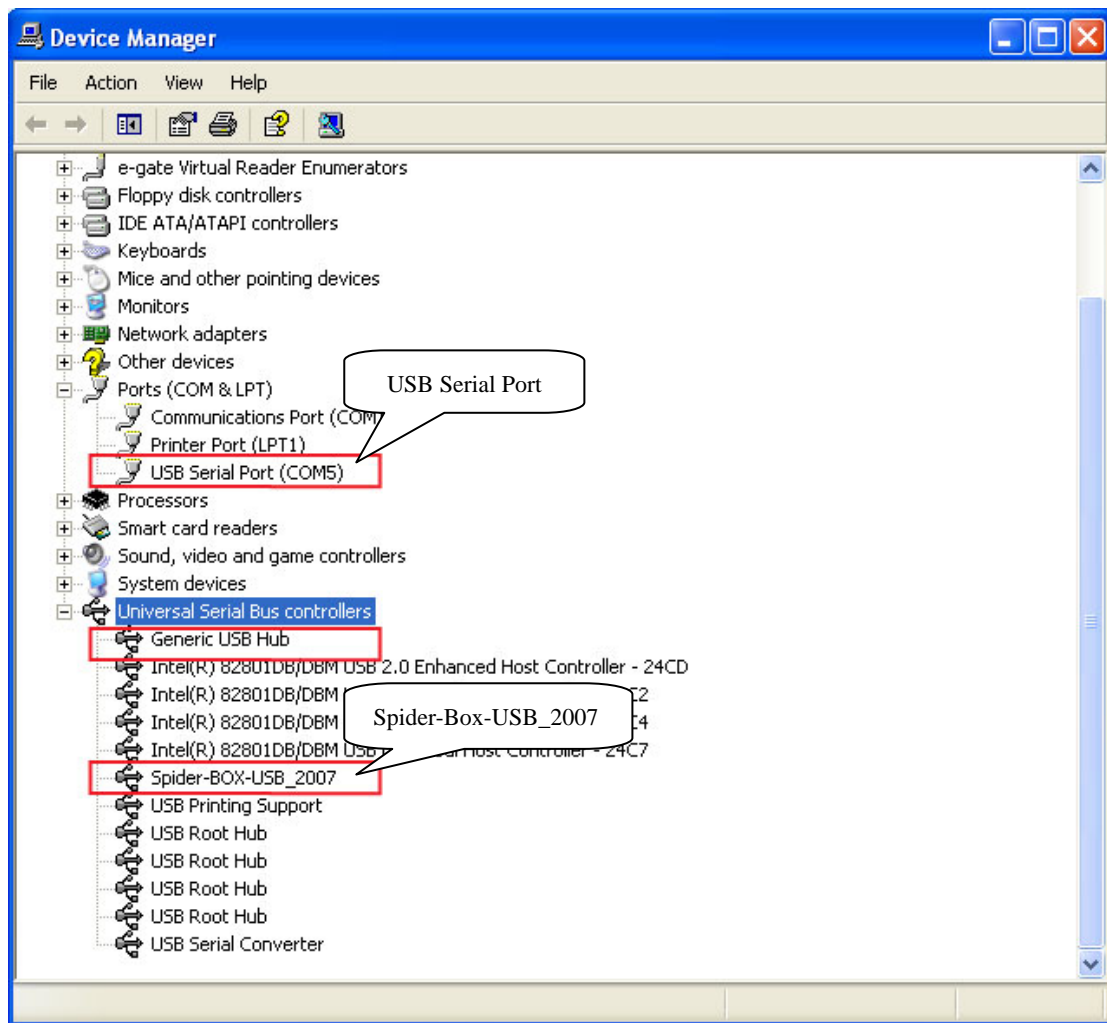
Completing new hardware (Spider-Box-USB\_2007) install

## 1.1.2 FT232 USB-COM Driver





Completing new hardware (USB Serial Port) install



Install of success